

With a history dating back to 1935, London-based CTL Components Group plc operates two plc subsidiaries, each with diverse activities. Employing 50 people, the entire Group is accredited to ISO 9001:2000.

CTL METALWORK plc

Sub-contract metalwork services:

- Precision Sheet Metalwork.
- Integrated Painting/Finishing, Screen Printing, and Assembly.

CTL COMPONENTS plc

Electrical Cable Accessories Division:

- Joints, terminations, connectors etc.

Electronic Components Division:

- LEDs, bargraphs, light guides, LCDs, knobs, handles, switches.



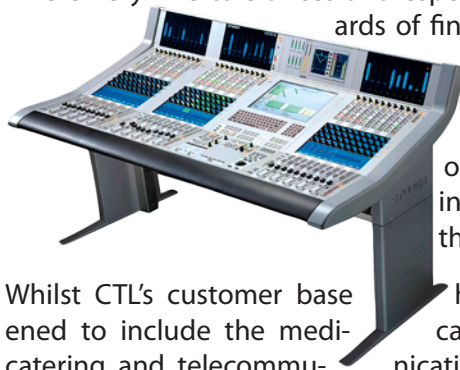


"One-Stop-Shop" for finished sheet metalwork

CTL Metalwork plc offers a "one-stop-shop" sub-contracting service for fine-tolerance sheet metalwork, metal fabrication, painting and powder coating, precision screen-printing and mechanical assembly.

Products manufactured are generally enclosures for electronic and electrical equipment. The customer base includes market-leaders in the pro-audio, telecommunication, IT, military, catering equipment and medical sectors.

CTL has traditionally specialised in the Pro-Audio market, where very fine tolerances and especially high standards of finish are called for.



As a result, pride in the excellence of the factory's output has been ingrained into the work force.

Whilst CTL's customer base has now broadened to include the medical equipment, IT, catering and telecommunication sectors, these newer customers are often delighted to receive products that are finished to standards higher than those called for in their specifications.

South West London has long been considered a centre of excellence for precision sheet metalwork. CTL are fortunate in having a stable, skilled, work force, many of whom have over fifteen years of service with the company. This invaluable experience has recently been complemented by several key management appointments, which have served to bring fresh thinking into the company.



In order to deliver both the price competitiveness and the production flexibility demanded by customers, the CTL team has adopted an overtime system free of any premium rates.



Sheet Metalwork Summary:-

- Sheet metal up to 6 mm thick, 3m long.
- Batch sizes - prototypes to large production runs.
- Several CNC punching & folding machines, with secondary ops.
- Aluminium & steel welding.
- Computer-based production control, shop floor data capture & WIP analysis.
- BS EN ISO 90012000 Accredited.



Finishing is offered using either wet paint or powder coating. The latter utilises CTL's new state-of-the-art fully automated paint plant, which produces high yields of extremely fine quality work.

Precision screen printing is as much an art as an engineering process and the CTL team are specialists. Not only do they perform extremely fine tolerance printing on to enclosures manufactured in-house, they also specialise in labels and overlays.



The latter are front panels with graphics reverse-printed on to a clear polycarbonate sheet, which is then bonded to an exactly matching metal base. The result is an



attractive and extremely durable front panel on which even intricate multi-coloured graphics will retain their clarity and sharpness in harsh industrial environments.

CTL Metalwork plc has enjoyed substantial sales growth during the past twelve months and the Group is currently making significant further investments in this company.



New IT systems have recently been introduced, a state-of-the-art new paint plant was commissioned at the start of 2006 and a new Trumpf 2020 with auto sheet feeder was installed in September 2007.



Electrical Cable Accessories Division

The Electrical Division manufactures and distributes the CTL ranges of Resin and Heatshrink Cable Joints and Terminations.

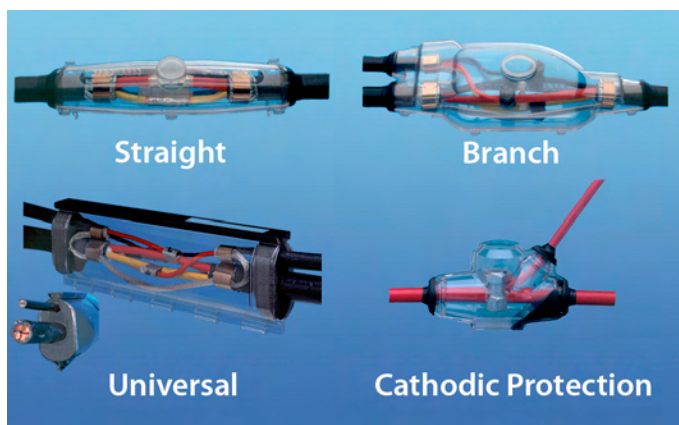
CTL cable accessories are used by most of the UK's major contractors and are stocked by the UK's leading electrical wholesale chains. CTL is the sole supplier of cable joints to the UK Highways Agency.



Over 50% of the Electrical Division's production is exported, with the Middle East and Far East being especially strong markets. Products are tested to CENELEC HD 629.1/DIN VDE 0278 and hold approvals from many major companies world-wide.

Resin Cable Joints

CTL manufactures its own premium "Clearcast" brand as well as own label products for other companies. Covering both LV & MV, joint types include:



Specially formulated resin is supplied with the joints in easy-mix, two-part pouches. CTL also supply a variety of other resin types for various electrical and electronic applications.



Heatshrink Joints & Terminations

CTL's C-Shrink range encompasses:-

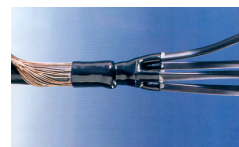


Thin, Med. & Thick Wall tubing.

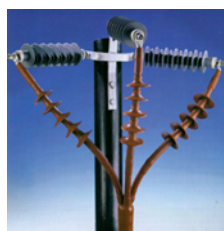
Cable endcaps



Cable Breakouts



Terminations ranging from 1kV to 36kV, single core and three core, for both indoor and outdoor applications.



CTL's dual expertises are combined in their MV (15kV) joint, which utilises heatshrink encapsulated in resin to provide mechanical protection and prevent water ingress.



Thin wall tubing in dispensing boxes. Choice of ten sizes and eight colours.

Connectors

Mechanical connectors and constant force springs designed to match CTL's ranges of joints.



Other connectors of all types and sizes are available to meet any cable jointing requirement.

Tapes

High dielectric self-amalgamating and polyurethane tapes.



Compression connectors & crimping tools



Copper or aluminium insulated or non-insulated lugs and ferrules along with ratchet, hydraulic or electric crimping and cable cutting tools.

Cable clamps



Extensive ranges of cable clamp systems for various applications including rail tunnels.



Electronic Components Division

The Electronic Division acts as a UK-exclusive distributor for a number of prestigious component manufacturers. Its customer base mirrors that of CTL Metalwork plc and the Division is a preferred supplier to Farnell InOne.

Product ranges extend from opto to electro-mechanical components:-

Lightguides perform the function of transferring light from one location to another with little or no loss of luminance. They have many applications; one of the most popular is to transfer light from an SMD LED (or from a poorly positioned LED) to an enclosure's front panel.



SMD LEDs are available as single, dual, or multi units with various sizes of LEDs. Board edge, horizontal, and vertical mounting versions are all available.

THT LEDs - the range extends across a broad spectrum of types, including bevelled housings and infra-red emitters.



LCDs - a wide range of standard types and sizes as well as a swift and economical service for specials.

Bargraph arrays offer elegant and cost-effective solutions to multi-LED requirements. CTL offer a wide range of standard units from double to twenty-way versions, build-your-own modular bargraphs, and custom-made solutions in strip or circle designs. Bargraph arrays that combine SMD LEDs with light guide technology are a speciality.



Knobs, including modular systems with accessories. Both plastic and metal types are offered and there are many designs for specialist applications.



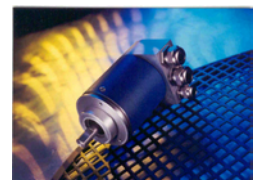
Switches, including push, slide rotary, binary, DIP, toggle and capacitive as well as test and switch jacks.

Handles - hundreds of sizes, styles and materials; stainless steel, aluminium, plastic, modular, panel, equipment sprung, strap illuminated etc.



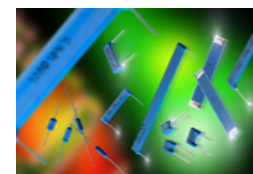
Control Panel Meters including mechanical, electromechanical and electronic counters, hour meters (elapsed time indicators) and tachometers.

Encoders both incremental and absolute types for use in motion control.



Industrial Ethernet - ruggedised ethernet switches for industrial, marine, utility and military users requiring high reliability, superior performance and exceptional noise immunity in a hardened enclosure.

Precision resistors - fine tolerance high thermal stability components for instrumentation applications.



The Electronic Division also runs an **Eastern European** operation, distributing into Serbia, Montenegro, Bulgaria; Croatia; Czech Republic; Hungary; Macedonia; Poland; Romania; Slovakia; Slovenia Bosnia and Herzegovina.



Falcon House, 19 Deer Park Rd, London SW19 3UX. United Kingdom.
Tel:- +44 (0) 20 8545 8700, Fax:- +44 (0) 20 8540 0034.
e-mail:- info@ctl-components.com, web:- www.ctl-components.com.